



 **airhub**  
AVIATION

Aviation Centre of Excellence



# Airhub – Aviation Centre of Excellence

EASA Approved Aviation Training Organisation



**Who we are?**



**Strategically great location**

## MODERN & COSMOPOLITAN

- Hundreds of international companies have moved their service centers and manufacturing plants to Lithuania
- Vilnius is home to people of 128 different ethnicities (making 1/3 of city's population)
- Most people are tech-savvy and well educated (53% of population with higher education)

## COSY & COMPACT

- Capital city Vilnius has only 0.5 million population
- Well-developed and easy-to-use local transport system

## SAFE

- No terrorism threat (no cases so far)
- Very low probability of natural disasters
- Friendly and helpful people
- High quality medical service (free of charge in case of emergencies)

## QUALITY OF LIFE FOR AFFORDABLE PRICE

- Living and other costs in Vilnius are relatively low (as compared to other EU capitals)
- Lots of free cultural and sports events
- Free public Wi-Fi basically everywhere









## Facilities and training equipment



DA40 / DA42  
Aircrafts

- GARMIN 1000 Glass cockpit
- SE/ME Piston Engine Aircraft
- Super low fuel consumption
- Superb visibility
- 4-seater



FNPT II Simulator

- EASA CS-FSTD(A) Issue 2 – FNPT II with MCC
- Diamond DA40-NG & Diamond DA42-VI
- Flight and Navigation Displays: GARMIN 1000 NXi, GPS, NAV (with GFC700 AFCS)
- Real Aircraft cockpit, furnishing and controls



Vilnius Airfield

- 3 hangars for use
- Briefing rooms
- Cafeteria
- Surrounded by nature



Airhub ATO location

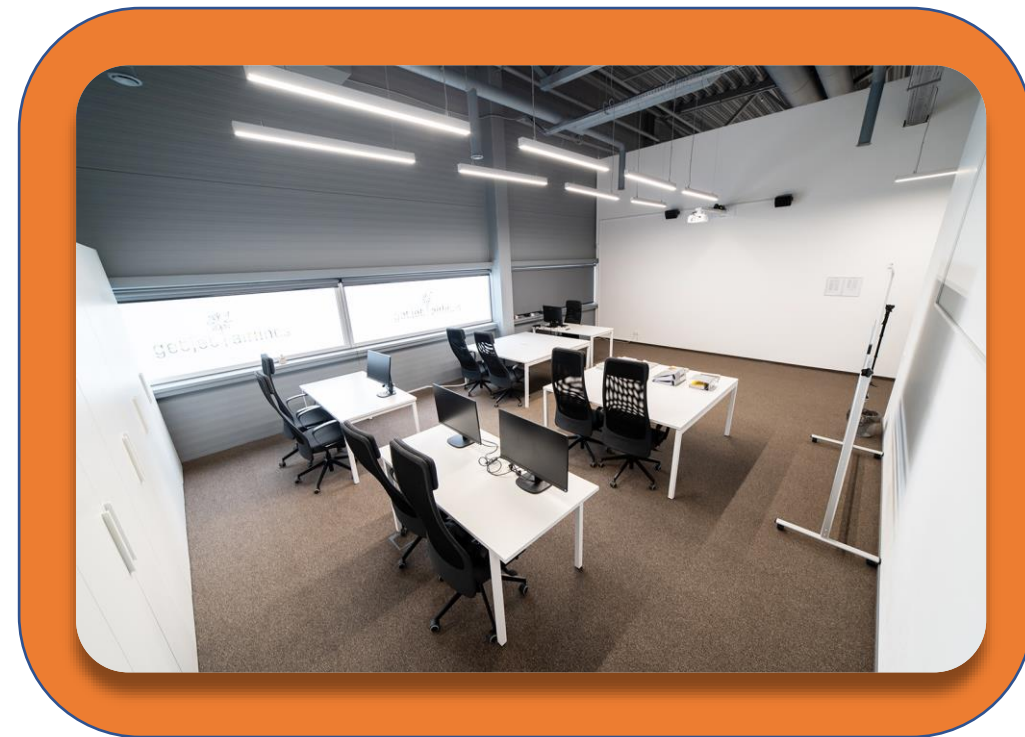
- Located in Vilnius, Lithuania
- Walking distance to Vilnius international airport
- ~6 km to Vilnius old town
- All training facilities under one roof



Lobby



Kitchen





Flight bases - Growing and expanding



Lithuania



Larnaca Airport in Cyprus



# Our Training programmes:

→ ATPL Integrated

Modular Training ←

MCC

Type Rating ←

Base Training

→ Line Training



# Brand New Fleet and Facilities

## Fleet:

- 2 x DA40 Aircrafts
- DA42 Aircraft

## Simulators:

- FNPT II MCC Simulator
- A320 CEO/NEO FFS
- B737 NG FFS
- B737 MAX FFS







Supported by:



## SERVICES WE PROVIDE



### ACMI LEASE

Long-term and  
short-term ACMI lease

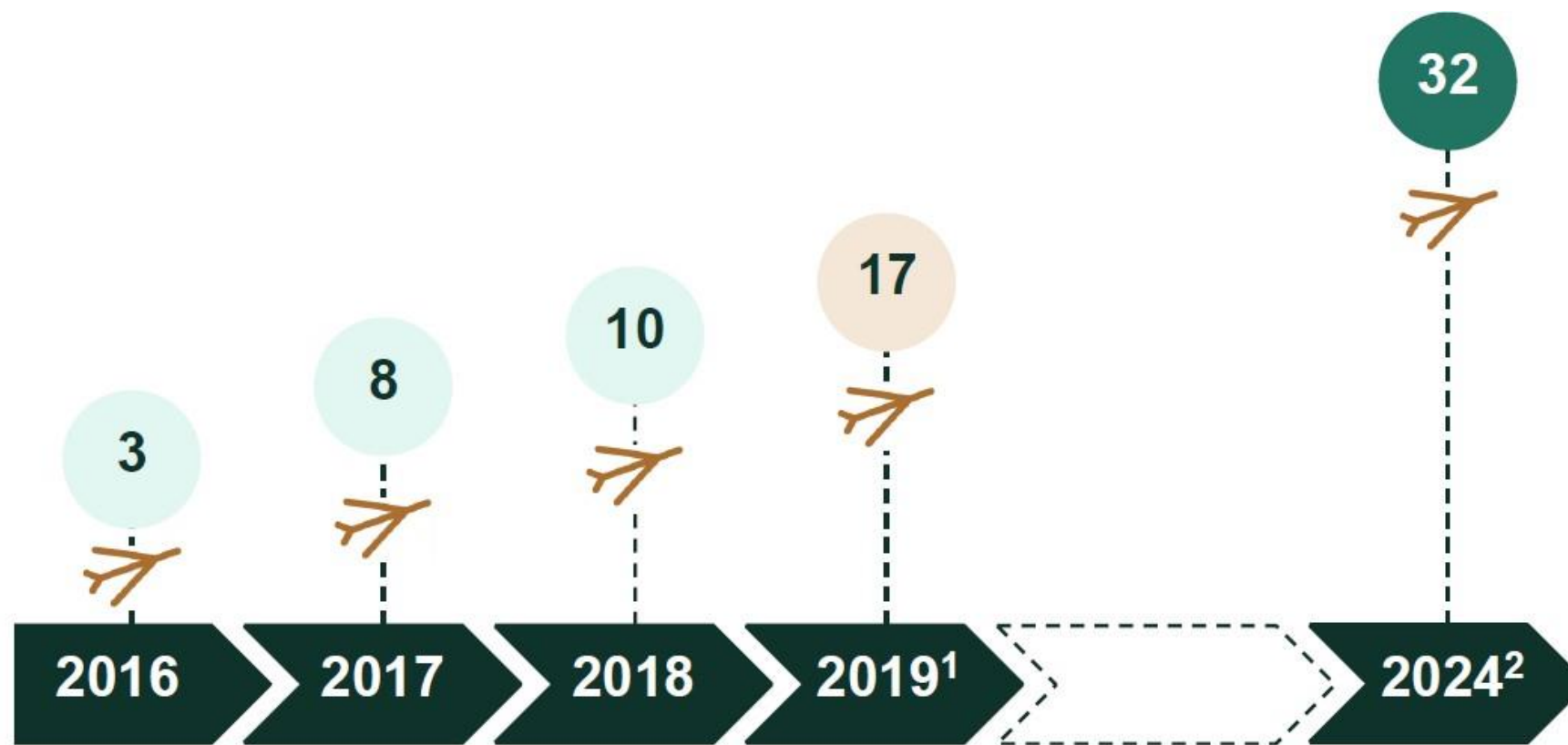


### CHARTER FLIGHTS

Full charter service  
provider



## FLEET GROWTH



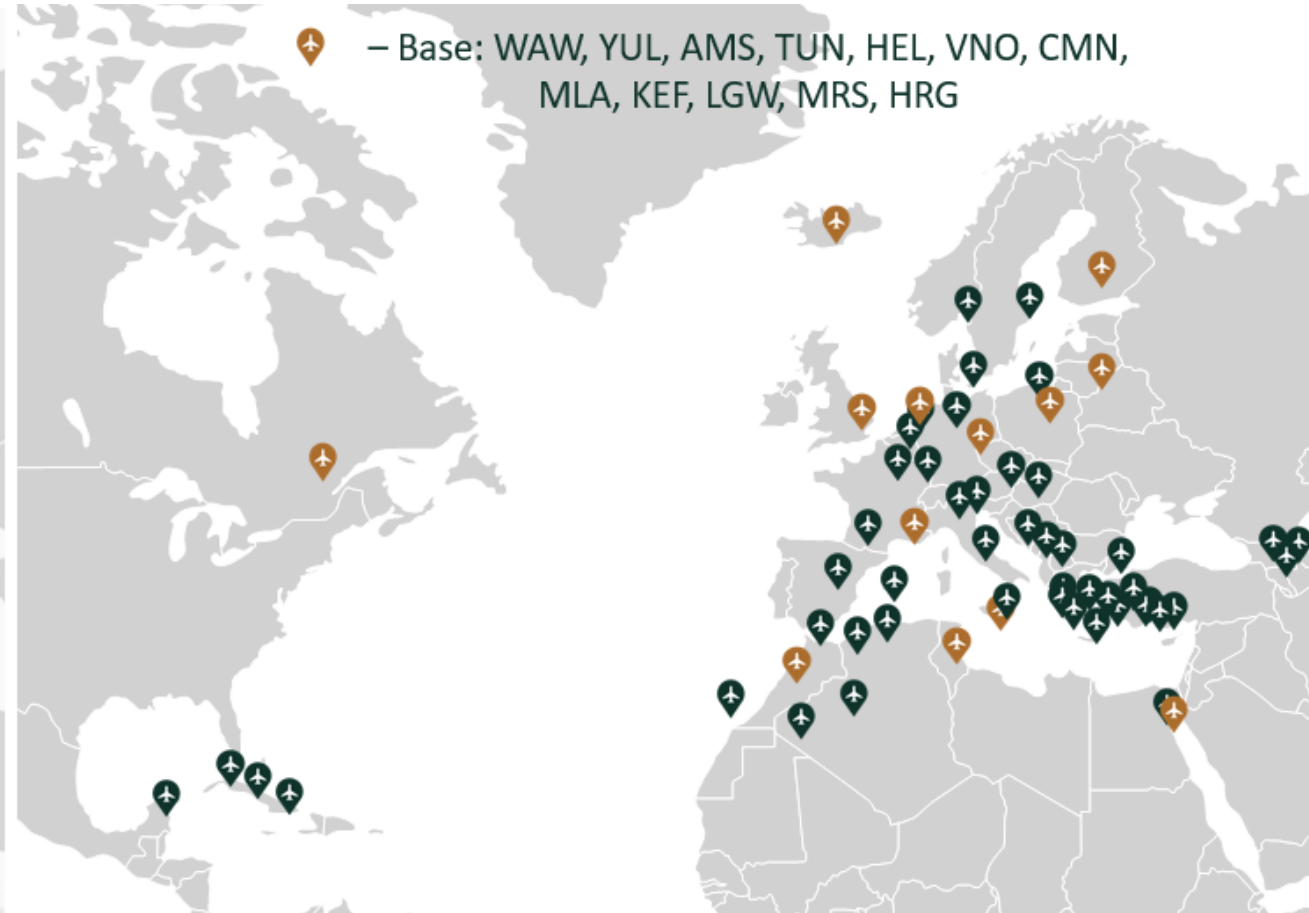
*GetJet will continue its fleet expansion efforts to a target fleet of 30-35 aircraft, by **integrating in-demand narrowbody and widebody aircraft** while simultaneously **phasing in Boeing 737 NGs to replace the Classics** as part of a broader initiative to modernize its product line, enhance efficiency and maximize profitability*

# ROUTE MAP

2018



2019





## GETJET CLIENTS



# Is it all **about** fun?





# Responsibility

# Will you **find** the balance?



# How to become a pilot?

**18 +**

Age



Education



Knowledge



Entry tests



Health



# Assesement

- Psychometric evaluation
- English, Mathematics, Physics
- Cognitive abilities
- Interview
- Interview with an airline



KNOW

# Medical

EASA 1st Class Medical Certificate

## Documents required for medical:

- Transcript from a family doctor
- Transcript from psychiatrist
- Transcript from narcologist

MED

A conceptual illustration of a human head profile in silhouette, facing left. Inside the head, several interlocking gears of different sizes and colors (grey, black, and one prominent red one) are visible. Dashed lines connect these internal gears to a variety of icons and symbols arranged around the head. These icons represent different domains of knowledge and technology: a laptop, a lightbulb, a DNA helix, a musical note, a globe, a microscope, a person, a beaker, a gear, a Twitter bird, a smartphone, a document with a checklist, a magnifying glass, a book, a classical building, a gear, a compass, a pencil, a rocket, a chemical structure, a water molecule (H2O), a 2+2 equation, a briefcase, a person running, a cube with letters a, b, c, a ruler, and mathematical symbols like ABC, sqrt(123), and a pi symbol. The entire illustration is set against a light grey background and is framed by a dark teal border with rounded corners.



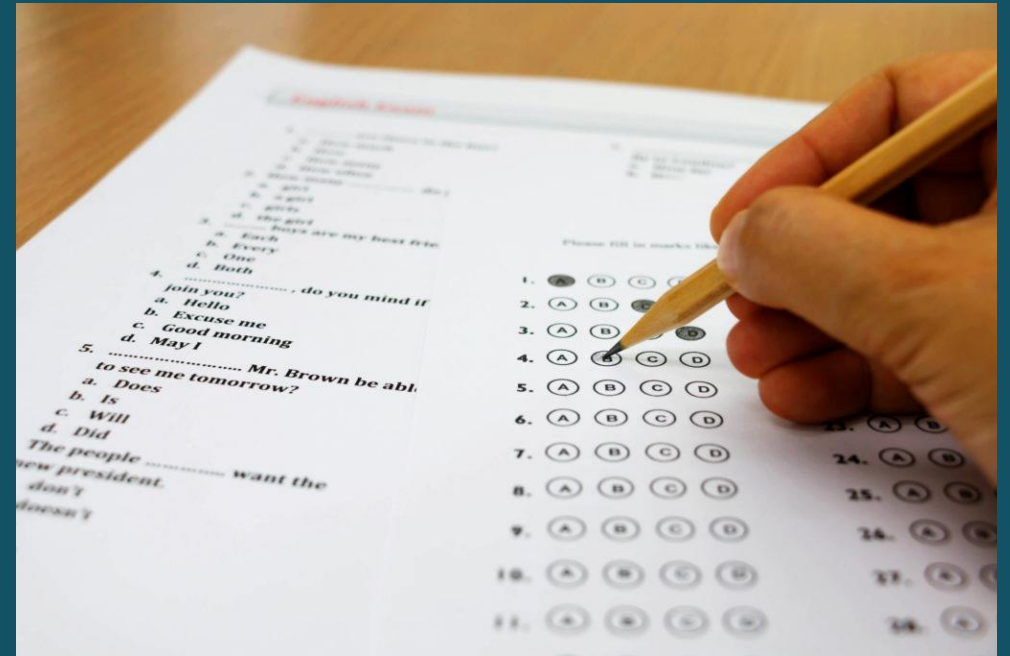
The Skill Test examines and measures your sensory and motor skills, as well as your ability to multitask and think logically.

During the test you will have to complete distinct tasks, which will include memory recall, orientation in space, spatial awareness, understanding physics and mathematics, and other subjects.

We definitely recommend practising with an IQ test or two, to prepare for some of the assignments!



During an English Test we will rate how advanced your speaking, grammar and vocabulary skills are. Do not worry if your aviation dictionary is rusty, as it will be our job to help you improve.



The last stage is an Interview, during which we will discuss your assessment results and will expect to hear about your motivation to become a pilot.





- Step No. 1 - Filling the application. Once the application is approved you are invited to the assessment.
- Step No. 2 – Payment for the assessment. Airhub personnel send you the invoice for the assessment. Once the invoice is paid, money received you are registered for the Flight School Assessment.
- Step No. 3 - Create an account at Mollymawk Psychometrics. Complete your registration and order test packages using “bonus codes” that Airhub personnel will send to you with detailed Mollymawk psychometrics instructions. Order your test packages minimum one week before your final assessment.
- Step No. 4 - Preparation for Mollymawk Psychometrics assessment. Once your final assessment date is approved you should start your preparation for the Mollymawk Psychometrics assessment.
- Step No. 5 – Assessment Center. You should demonstrate your best performance and just let us know you better when the assessment day come.



Assessment center takes two days:

Day 1 – Mollymawk Psychometric test, that takes approx. 3 hours and personality test that takes approx. 1 hour.

Day 2 – Competence based Interview, that takes 1-1,5 hour.

- Step No. 6 – Acceptance decision. Once all the assessment stages are completed you will be informed about the final decision.
- Step No. 7 – Training program agreement.



# ATPL Integrated Course Content

Program	ATPL THEORY	ATPL EXAMS	VFR/NVFR	IFR		UPTR		MEP		MCC	
				FNPT	SEP	THEORY	A/C	FSTD	MEP	THEORY	FNPT
Training hours	750	15	85	37	59	5	3	8	3	25	15
Timeline	0 - 9 month	9 - 12 month	12 - 20 month							20 - 21 month	



# Pilots Needed Over the Next 10 Years

AMERICAS

**+110k**  
New pilots

ASIA-PACIFIC

**+100k**  
New pilots

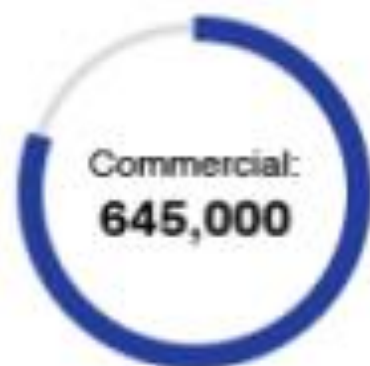
EUROPE, MIDDLE  
EAST & AFRICA

**+90k**  
New pilots

**+300k**  
New pilots

## Pilot Outlook by Region

New Pilot Demand 2019-2038



# Salary Comparison By Experience

Pilot  
Spain



Average Monthly Salary



# Become GetJet Airlines cadet

**ATPL  
integrated**

**Type  
rating**

**Base  
training**

**Line  
training**






## Commercial proposal for “from ZERO to HERO” training:

**Duration:** ~24 months to get ATPL frozen

Training and learning material, licensing and examination fees, ICAO English examination, uniform, fuel, landing fees.

Accommodation, transportation and other supportive services if required.

**Outcome:** EASA CPL license (ATPL *frozen*)  
Type Rating Qualification  
Line Training (200 hours)

**Price:**  69.000 Euros

---

Get in touch at:

[apply@airhub.aero](mailto:apply@airhub.aero)

+37065816063

Visit [Airhub.aero](https://airhub.aero)